

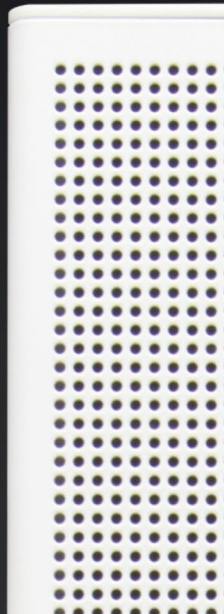
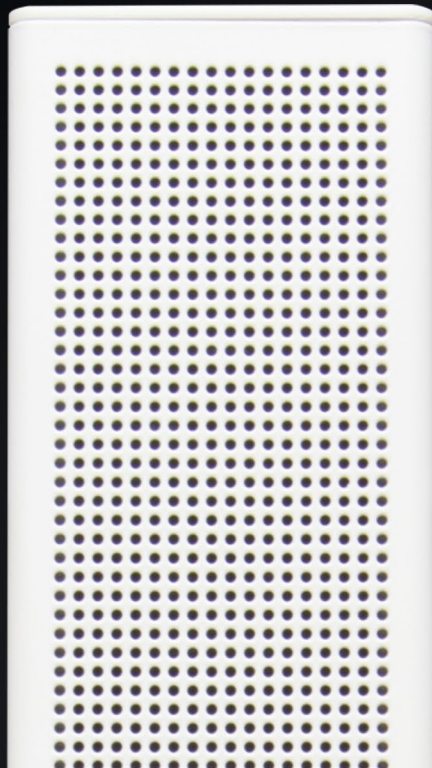
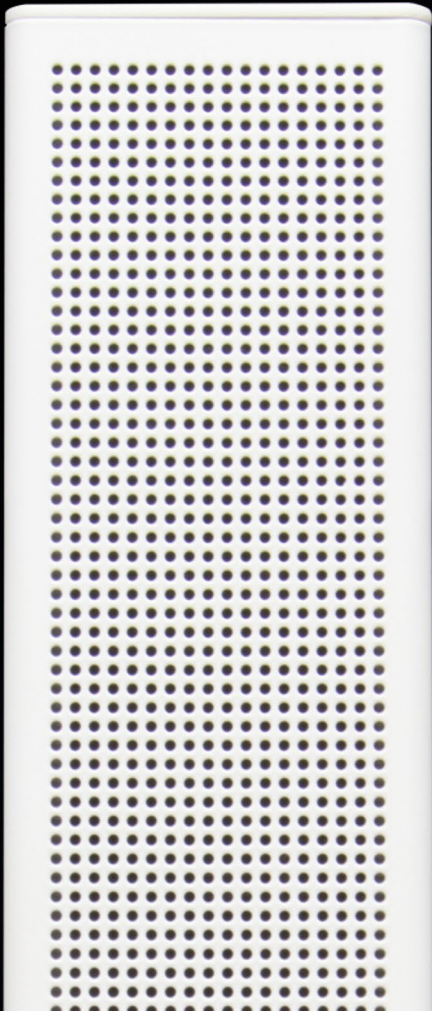
# UDA

series

# UDA

**series**

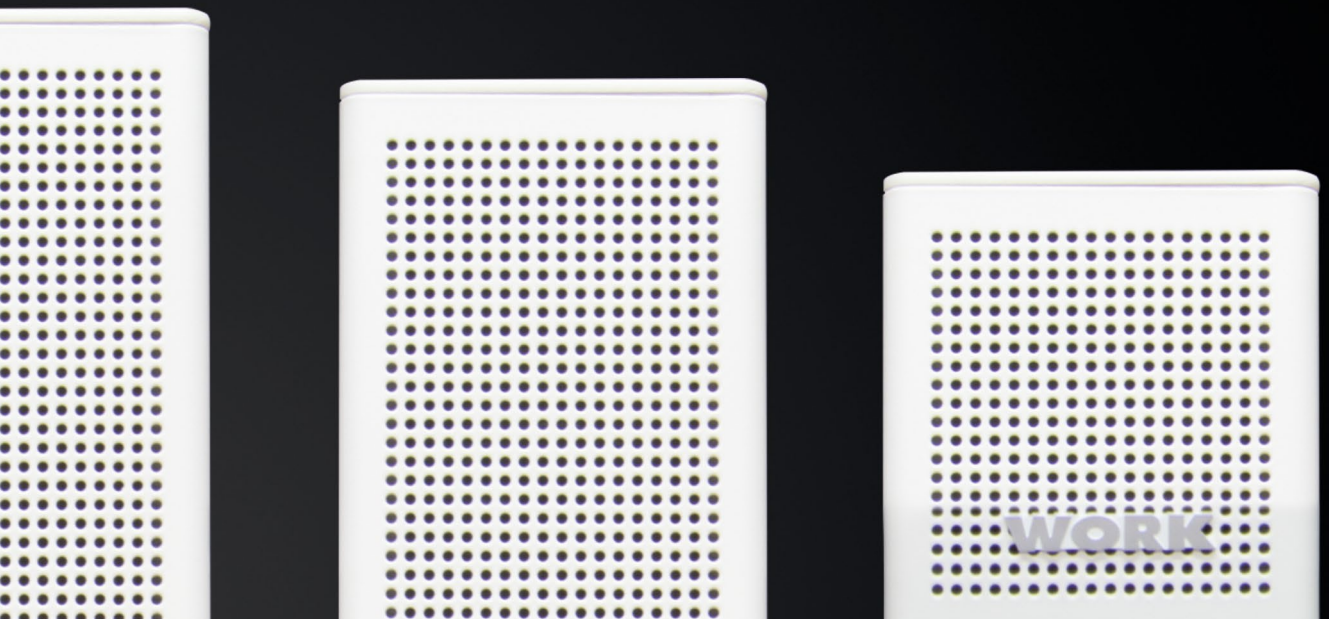
The UDA Series is a high output, full range, frequency shaded passive series of column speakers which provides voice intelligibility and musical clarity in acoustically challenging environments such as shopping malls, houses of worship, restaurants, congress halls, hotels, airports, train stations, swimming pools, conference rooms or museums, where reflective surfaces create a reverberant sound field.





# FEATURES

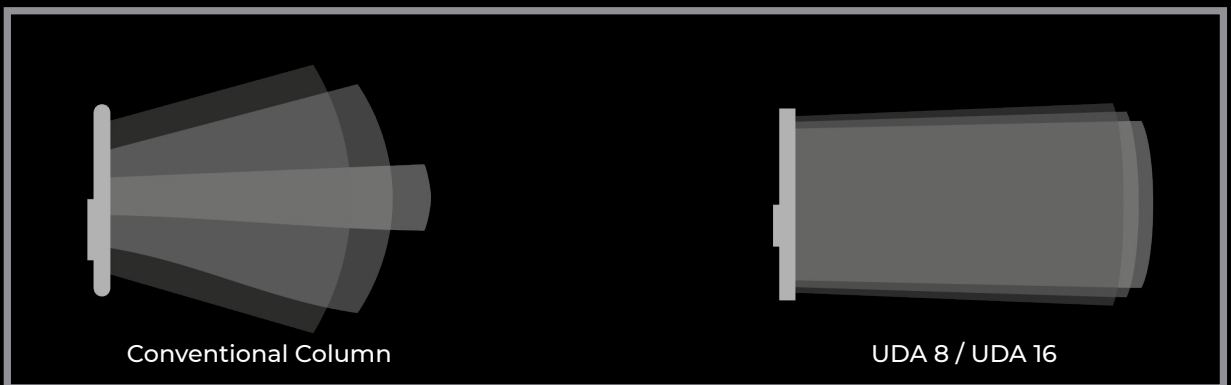
- Suited for reverberant environments.
- 140° Horizontal coverage.
- Stylish and visually discreet design.
- Extruded aluminium enclosure.
- Outdoor IP 65 rate.
- Low and High impedance available.



# DIRECTIVITY CONTROL

A proprietary IST (Interdependent Shading Topology) network has been designed to keep constant the ratio wavelength-column size, which results in a controlled vertical coverage in the vocal range.

This makes the UDA series suitable to be installed in rooms with problematic sound reflections where vocal intelligibility is paramount.



LF \_\_\_\_\_

MF \_\_\_\_\_

HF \_\_\_\_\_

# TECHNICAL DATA

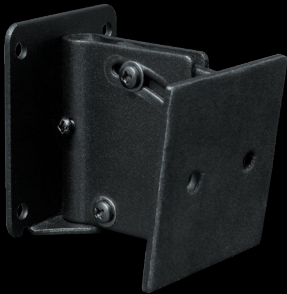
	UDA 1	UDA 2	UDA 4	UDA 8	UDA 16
Transducers	1x2.75" Diameter	2x2.75" Diameter	4x2.75" Diameter	16x2.75" Diameter	16x2.75" Diameter
Nominal Impedance	8 ohm	8 ohm	8 ohm	8 ohm	8 ohm
RMS Power	12.5W (10V rms)	25W (28.3V rms)	50W (28.3V rms)	100W (40V rms)	200W (40V rms)
Program Power	25W	50W	100W	200W	400W
Sensitivity (2.83V@1m)	84 dB SPL	86 dB SPL	89 dB SPL	93 dB SPL	94 dB SPL
Peak SPL	101 dB SPL	106 dB SPL	112 dB SPL	119 dB SPL	123 dB SPL
Frequency Range	150Hz-23kHz (-10dB) 170Hz-20kHz (-6dB)	150Hz-23kHz (-10dB) 170Hz-20kHz (-6dB)	150Hz-23kHz (-10dB) 170Hz-20kHz (-6dB)	150Hz-23kHz (-10dB) 170Hz-20kHz (-6dB)	130Hz-23kHz (-10dB) 150Hz-20kHz (-6dB)
Hor. Coverage (-6dB)	140°	140°	140°	140°	140°
Ver. Coverage	90°	90°	90°	20°	20°
IP rating	IP 65	IP 65	IP 65	IP 65	IP 65
Connectors	Barrier strip			Speakon and barrier strip	
Enclosure	Aluminium				
Grille	Aluminium, water proof fabric backing				
Colour	Black or White				
Dimensions	119x104x116 mm	193x104x116 mm	337x104x116 mm	575x104x116 mm	1145x104x116 mm
Weight	1.1 kg	1.7 kg	2.9 kg	5.1 kg	11.2 kg



# ACCESSORIES

A variety of accessories are available for the UDA Series. Wall 4V and Wall 16 allow for the enclosures to be aimed both vertically and horizontally.

UDA TL permits the use of all the UDA Series speakers on high impedance lines



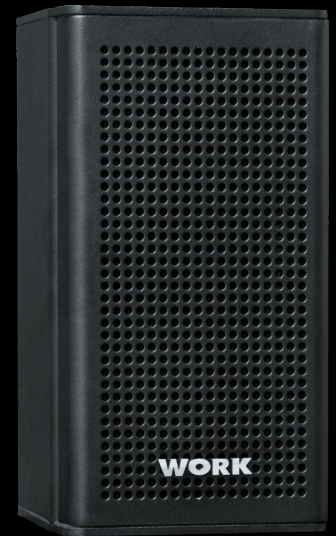
## WALL 4V

Wall mounting accessory for UDA1, UDA2 and UDA4 (included)



## WALL 16

Wall mounting accessory for UDA8 and UDA16. It allows also the assembling of two UDA16 units vertically (included)



## UDA TL

High impedance line transformer. 120W@100V.

Dimensions:  
193 x 104 x 116 mm.  
(Optional)

# INSTALLATION

The narrow extruded aluminium enclosure has been designed for a seamless visual integration in every venue and is available in black or white finish. The grille is also made of aluminium and internally covered with a protective water repellent fabric which prevents splashed water and dust from damaging the transducers, featuring thereby an IP 65 protection rating. Wall mounting accessories are included.

The units can be connected through either a barrier terminal strip or a Speakon connector (model depending). Connections are protected by a metallic weather resistant cover which prevents water or moisture from causing shortcircuits.

The accessory UDA TL allows for high impedance connection of the UDA units. It houses a 120Wrms@100V line transformer (60Wrms@70V) that makes it suitable for installations where long cables have to be deployed.



**WORK**<sup>PRO</sup> 



Av. del Saler, nº 14 · Pol. Ind. L'Alteró · Silla 46460 · Valencia · Spain · Phone: +34 96 121 63 01  
[www.workpro.es](http://www.workpro.es) - [equipson@equipson.es](mailto:equipson@equipson.es)

Due to a policy of ensuring constant improvement, Equipson S.A. reserves the right to change the specification in materials or designs of any product supplied without notice.